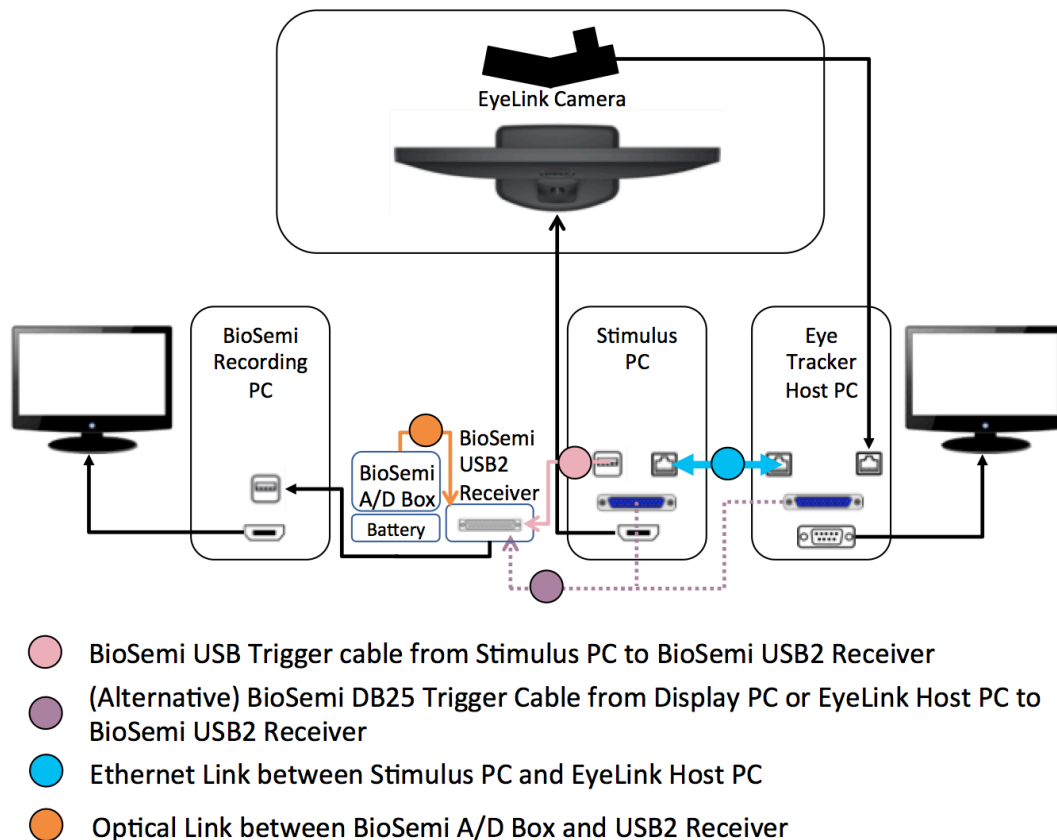


Adding Biosemi Integration to Existing EyeLink Experiments: A Quick Tutorial (EB Version 2.2.1)

This tutorial covers the steps required to add Biosemi EEG support to an existing experiment using version 2.2 or later of SR Research Experiment Builder. This example (Biosemi_EyeLink_Simple) is based on the “SIMPLE” example provided with Experiment Builder. Users who are new to the software are encouraged to re-create the SIMPLE example by following the step-by-step instructions provided in the Experiment Builder User Manual (“14 Creating EyeLink Experiments: The First Example”). This example illustrates creating experiments with simultaneous EEG and eye tracking recordings. If you are looking for an example that illustrates using Experiment Builder to control the Biosemi EEG without recording eye tracker data, please check out the “Biosemi_NonEyeLink_Stroop” example and the accompanying tutorial.

The following diagram shows an experiment setup for simultaneous EEG and eye tracking recordings.



Experiment Builder has built-in functionality to support communication between the Display PC and EEG computer via TTL. The new BIOMETRIC_TTL action introduced in version 2.2 of Experiment Builder offers more flexibility than the existing SET_TTL action, and simplifies integration with Biosemi EEG. This example uses the parallel port of the Display PC to send TTL signals, but the BIOMETRIC_TTL action also supports

sending TTL signals through a supported USB device (including the Biosemi USB Trigger Interface), or through the EyeLink Host PC in an EyeLink project.

- 1) The BIOMETRIC_TTL Control action implements the “Start Recording” and “Stop Recording” options, which can be used to send signals to control the start and stop of the recording for Biosemi EEG. Users will need to configure the “default.cfg” file on the EEG computer to set the values for “PauseOff” and “PauseOn” commands to 254 and 255, respectively.
- 2) The Biometric TTL Control also allows users to easily control the duration of a signal by sending a clearing signal (typically 0x0) shortly after the initial signal (instead of having to use two SET_TTL actions connected with a Timer trigger).

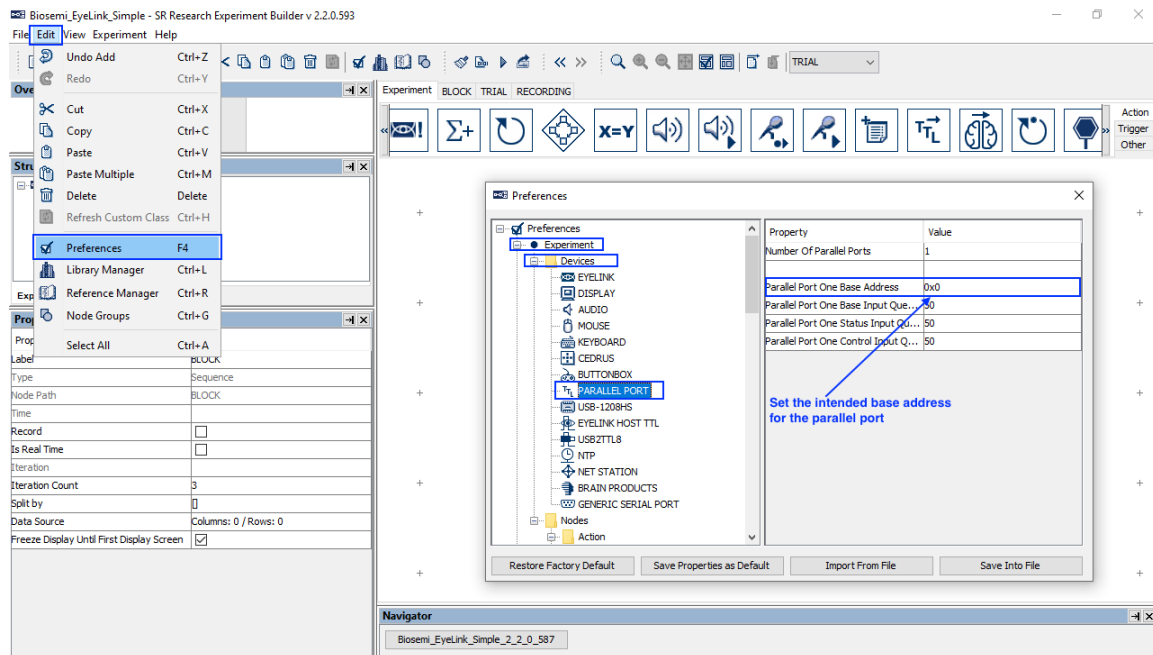
The current tutorial demonstrates how to unpause and pause EEG recordings and add event markers to an example experiment that mark the critical events that occurred in a trial. Although the discussion is based on the Simple example, steps covered here can be easily applied to any experiments programmed with Experiment Builder.

Please report all functionality comments and bugs to support@sr-research.com.

1 Configuring Experiment Builder Preferences

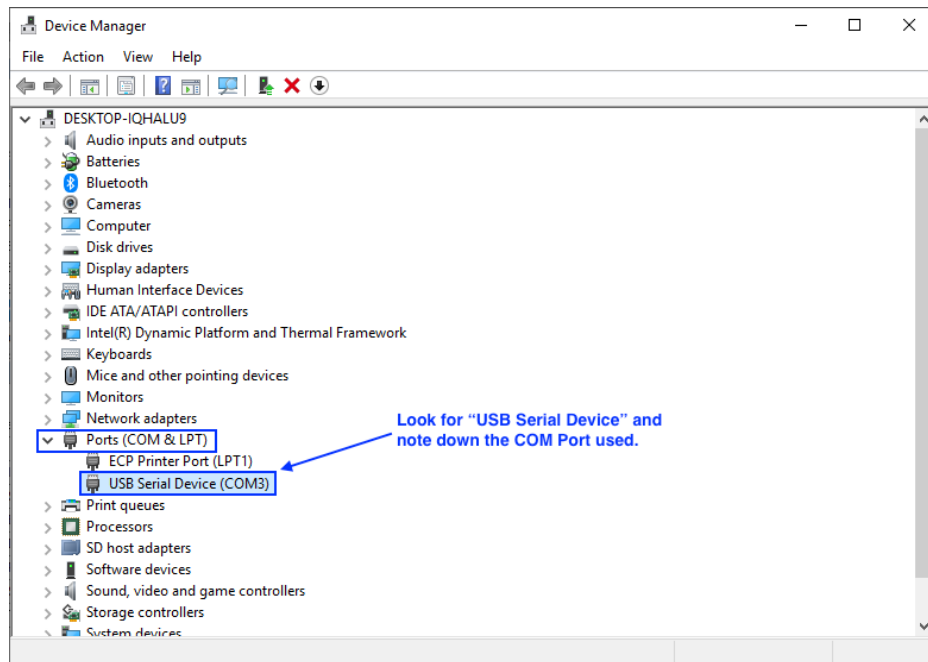
This section illustrates how to configure Experiment Builder to communicate with the Biosemi EEG. In this example, TTL signals are sent through the parallel port on the Display PC.

- 1) Select “Edit -> Preferences” from the application menu bar or press the shortcut key “F4” on Windows.
- 2) Navigate to the “Parallel Port” menu under “Experiment -> Devices” and look for the “Parallel Port One Base Address”. Enter 0x0 in the value field so that Experiment Builder automatically detects the parallel port device installed on the display computer and resolves its base address.

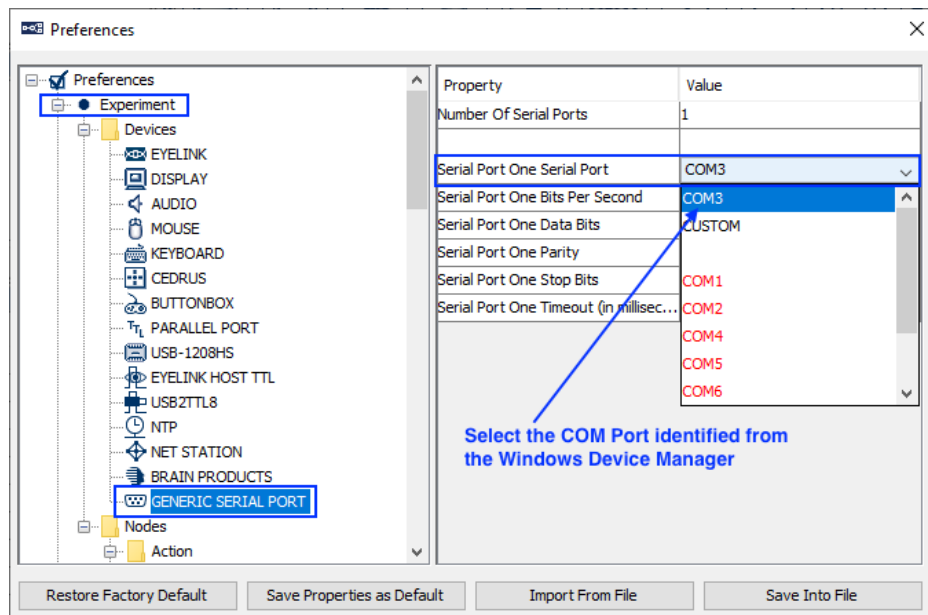


For display computers without a parallel port, users have other options to send TTL signals. For example, the USB-1208 HS by Measurement Computing and the USB2TTL8 by LabHackers are USB-based TTL devices that can be used on both a Mac and Windows PC. In an EyeLink experiment, users may send TTL signals through the devices installed on the EyeLink Host PC (configured through the “EyeLink_Host_TTL” Device). Experiment Builder also supports the Biosemi USB Trigger Interface (<https://www.biosemi.com/faq/USB%20Trigger%20interface%20cable.htm>), which can be used on both Windows and Mac OS X.

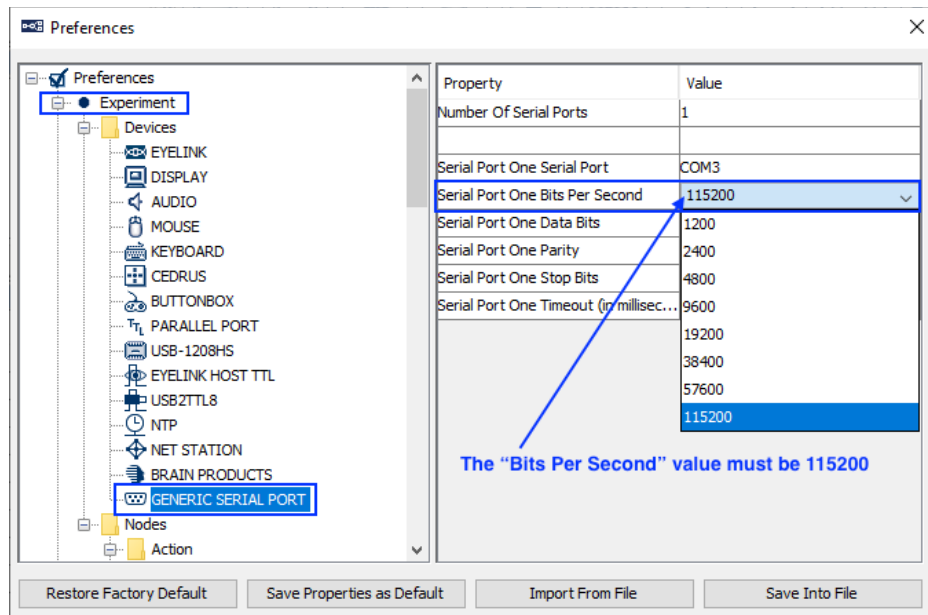
- 1) The COM port that the USB Trigger Interface uses can be found in the “Ports (COM & LPT)” section of the Windows Device Manager. Search the entry “USB Serial Port (COMx)”.



- Go to "Preferences -> Experiment -> Generic Serial Port". For the "Serial Port One Serial Port" field, select the COM port value identified from the Windows Device Manager. On Mac OS X, the COM Port will appear in the format of `"/dev/tty.usbserial-***"`.



- The "Serial Port One Bits per Second" field must be set to 115200 for the USB Trigger Interface to work properly.

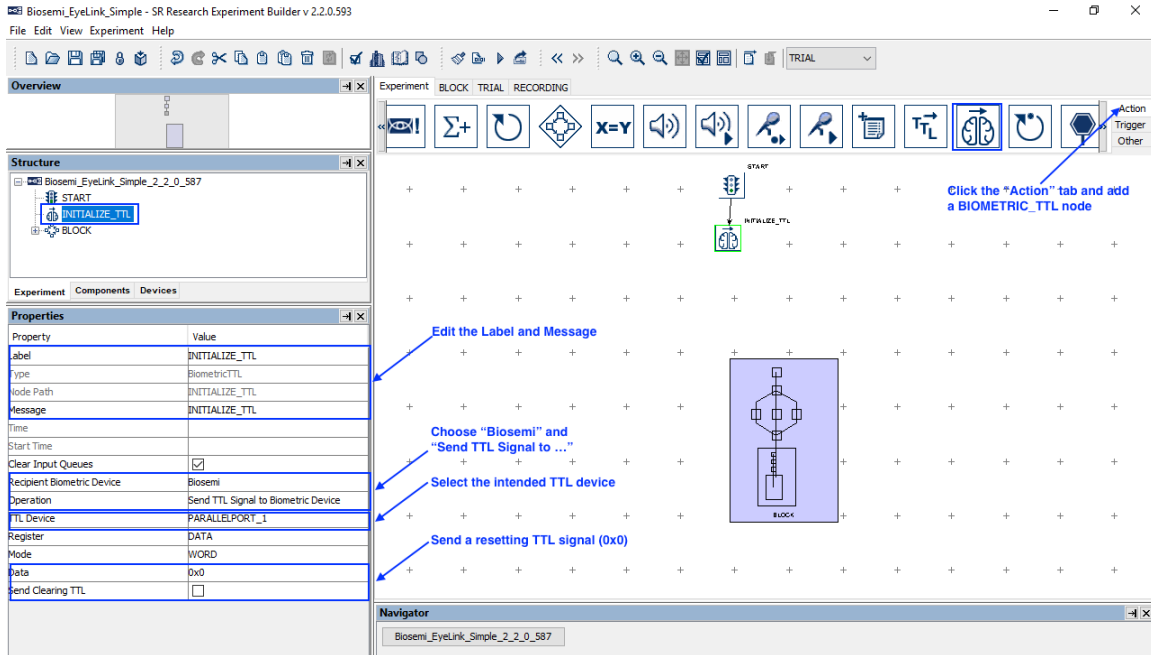


2 Setting the Default TTL Value and Controlling EEG Recordings

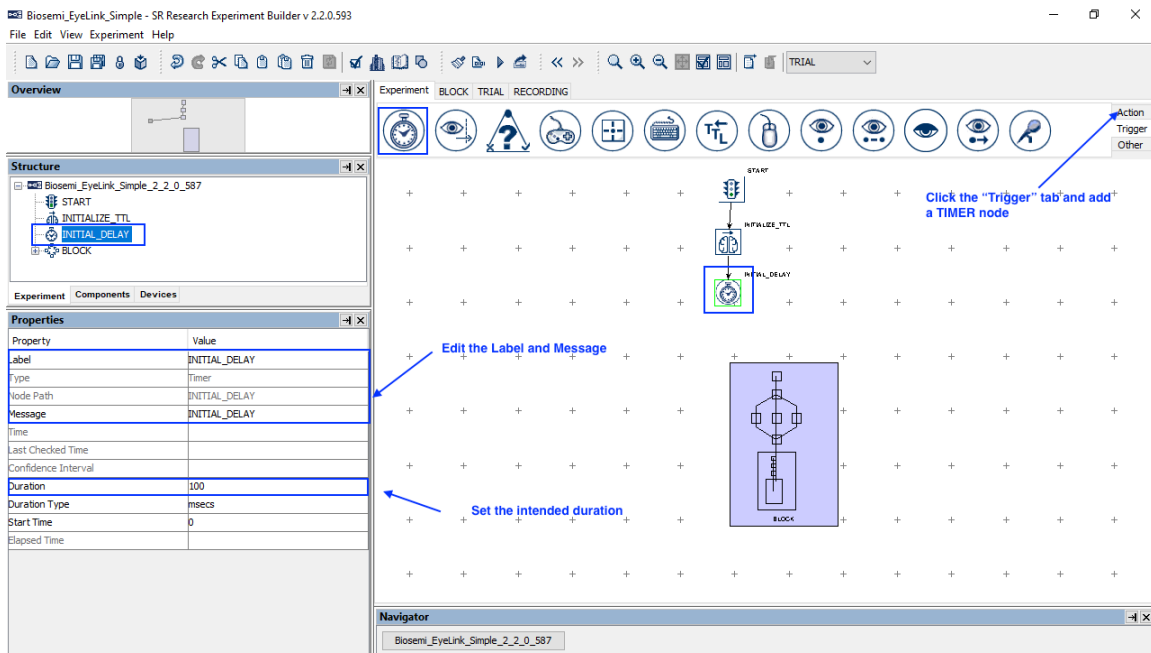
One important aspect of integrating eye tracking and EEG data is to ensure that critical events, such as display screens, and/or participants' responses, are marked in both the Experiment Builder results file and the EEG data file. For the Biosemi EEG system, a default TTL value (typically 0) needs to be set at the beginning of the project. To mark critical events (e.g., stimulus onsets, participant responses) in the EEG data, we can send a brief trigger immediately after the event, then reset the TTL value back to 0 so the EEG can receive the next event marker.

Biosemi EEG systems allow the user to start and stop the EEG recording by sending TTL triggers from Experiment Builder—please see section 4 for information on how to configure the EEG computer to use TTL signals to trigger EEG recording. In this example, we send a single Start Recording command at the beginning of the experiment, and a single Stop Recording at the end of the experiment. Users may also choose to start and stop the EEG recording multiple times within the project, for instance, by sending the start and stop commands at the beginning and end of each block of trials, or more rarely at the beginning and end of each individual trial. Make sure to include a short (1000 msec) delay after sending a Start Recording command, or before sending a Stop Recording command, to ensure the recording has stabilized.

- 1) Go to the topmost layer of the experiment.
- 2) Select the “Action” tab of the Component Toolbox and add a BIOMETRIC_TTL action. Set the Label and Message of the action to “INITIALIZE_TTL”. Set the Recipient Biometric Device to “Biosemi”, and set the Operation to “Send TTL Signal to Biometric Device”. Set the TTL Device—in this example, we use the parallel port on the Display PC (“PARALLELPORT_1”; if another device is chosen, a prompt will allow the user to set that as the default TTL Device for all Biometric TTL nodes). Set the Register to “DATA”, set the Data to “0x0”, and uncheck the “Send Clearing TTL” box. If using the Biosemi USB Trigger Interface, set the “TTL Device” to “SERIAL_PORT_ONE” and configure the proper serial port and data speed. Now connect the START node to the INITIALIZE_TTL node.



- 3) Select the "Trigger" tab of the Component Toolbox and add a TIMER node to the graph. Edit the "Label" and "Message" properties of the node to "INITIAL_DELAY". Set the "Duration" to be 100 (msecs). Draw a connection from the INITIALIZE_TTL node to the TIMER node.



- 4) At the beginning of the experiment, the EEG recording will be started. Select the "Action" tab of the Component Toolbox and add a BIOMETRIC_TTL node to the graph. Edit the "Label" and "Message" properties of the node to "START_EEG_RECORDING". Set the "Recipient Biometric Device" to

“Biosemi”. Set the “Operation” to “Start Recording”. Keep the same TTL Device and Register as in the previous BIOMETRIC_TTL action. By default the “TTL Signal Properties” is set to “0xFE 20 0x0”. Click the value field to bring up the “Edit TTL Signal Properties” dialog box to review the settings. The “Data” is set to “0xFE” (254 in decimal)—this is the unique trigger value that will be specified for “PauseOff” in Section 4. The “Send Clearing TTL” box is checked, the Signal Duration is set to 20 (ms) and a clearing value of 0x0 is used. Note that the duration required here depends on the sampling frequency used for the EEG recording and will need to be at least one sample period. A 20 msec pulse duration is typically appropriate, but consult your EEG system’s User Manual for the desired duration. If using the Biosemi USB Trigger Interface, set the “TTL Device” to “SERIAL_PORT_ONE”. Since that device automatically sends a clearing signal in 8 milliseconds, please uncheck the “Send Clearing TTL” box. Draw a connection from the INITIAL_DELAY Timer node to START_EEG_RECORDING.

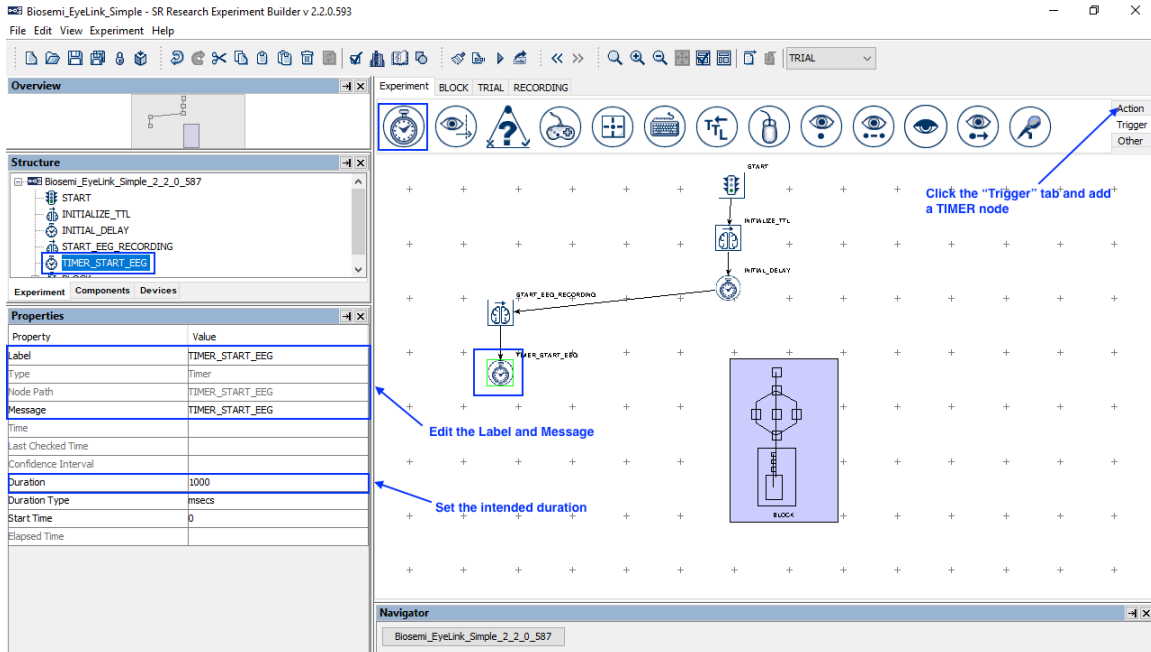
The screenshot shows the SR Research Experiment Builder v 2.2.0.593 interface. The main graph area displays a sequence of nodes: START, INITIALIZE_TTL, INITIAL_DELAY, and START_EEG_RECORDING. A connection is drawn from the INITIAL_DELAY node to the START_EEG_RECORDING node. The START_EEG_RECORDING node is highlighted with a blue box. A dialog box titled "Edit TTL Signal Properties" is open, showing the following properties:

Property	Value
Data	0xFE
Send Clearing TTL	<input checked="" type="checkbox"/>
Signal Duration	20
Clearing Value	0x0

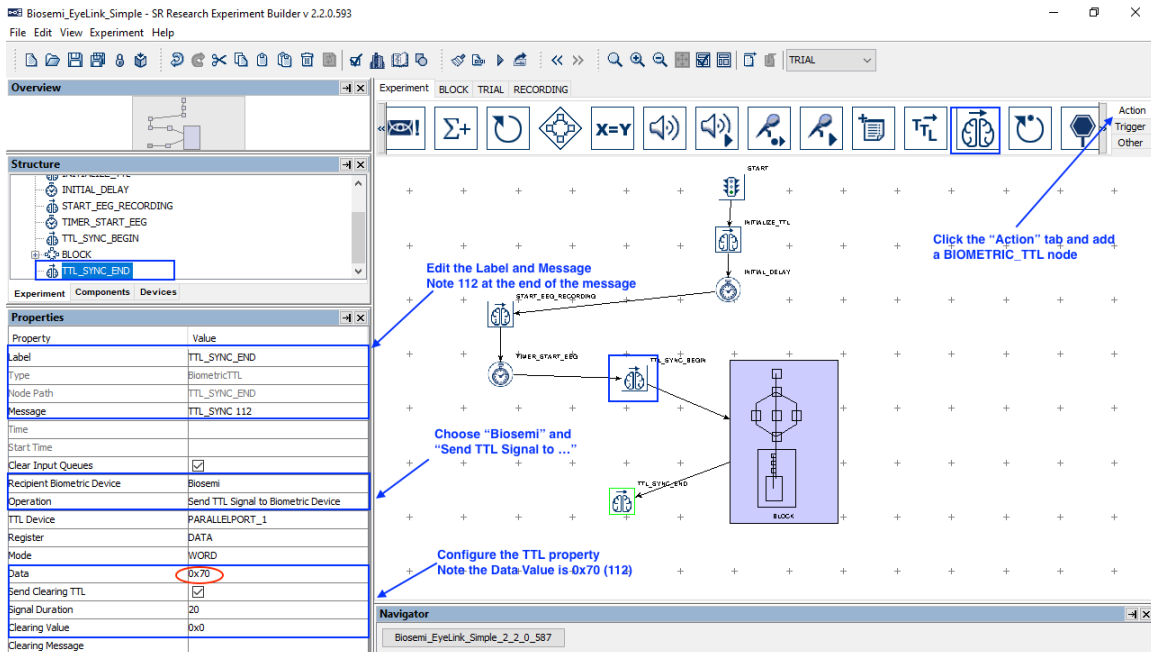
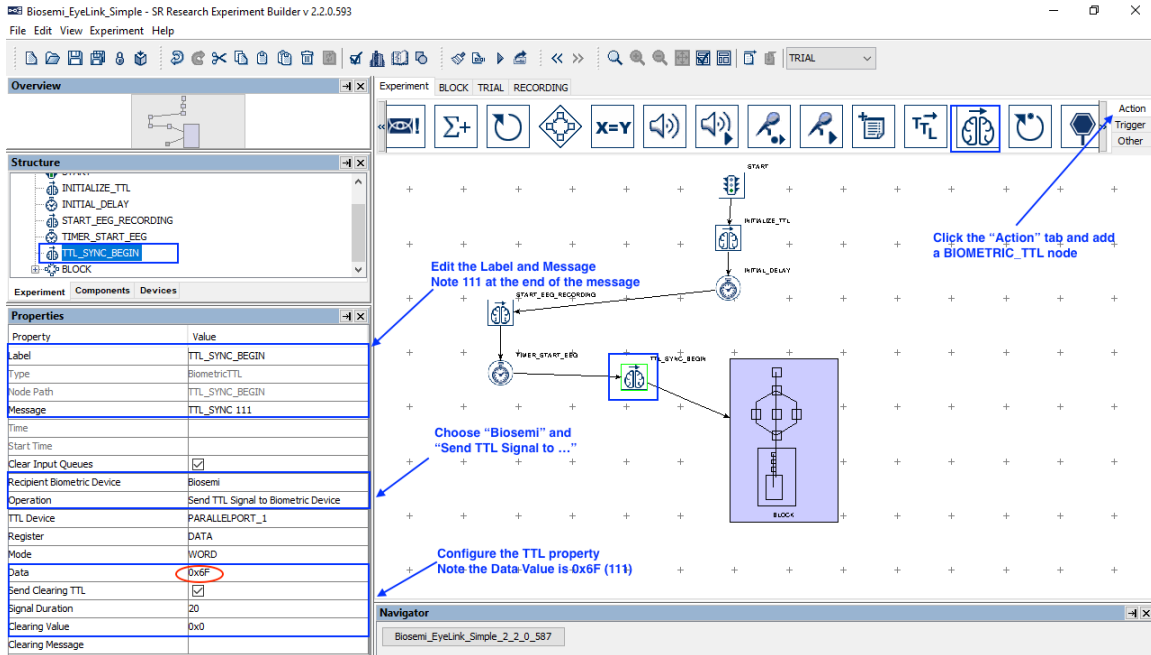
Annotations with arrows point to the following steps:

- Click the “Action” tab and add a BIOMETRIC_TTL node
- Edit the Label and Message
- Choose “Biosemi” and “Start Recording”
- Click here to start the “Edit TTL Signal Properties” dialog box
- Configure the TTL properties

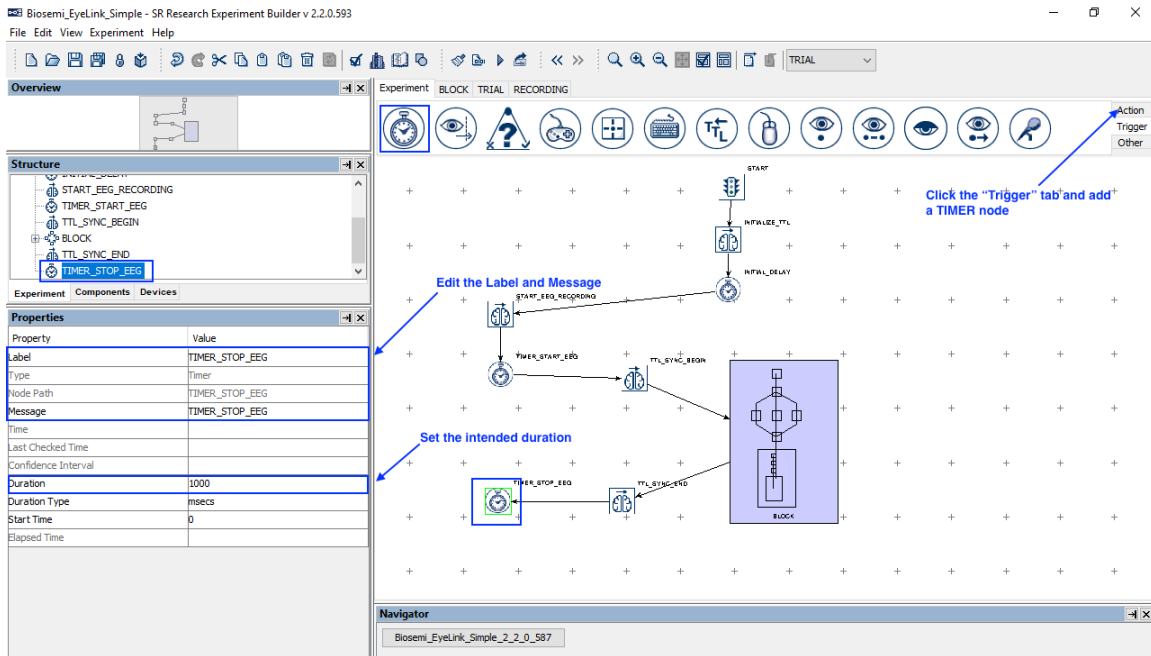
- Now that the TTL signal has been sent, we will add a delay of 1000 milliseconds to ensure the recording has stabilized. Select the “Trigger” tab of the Component Toolbox and add a TIMER node to the graph. Edit the “Label” and “Message” properties of the node to “TIMER_START_EEG”. Set the “Duration” to be 1000 (msecs). Draw a connection from the START_EEG_RECORDING node to the TIMER_START_EEG node.



- 6) To help align the eye tracking and EEG data, we will send a pair of synchronization pulses to the EEG recorder, one at the beginning of the experiment, and one at the end. The same events will be marked as Messages in the EyeLink Data File. Select the “Action” tab of the Component Toolbox and add a BIOMETRIC_TTL action. Set the Label of the action to “TTL_SYNC_BEGIN” and the message of the action to “TTL_SYNC 111”. The “111” at the end of the message corresponds to the TTL value that will be sent. Set the “Recipient Biometric Device” to “Biosemi”. Set the “Operation” to “Send TTL Signal to Biometric Device”. Set the “Data” to “0x6F” (111 in decimal). The “Send Clearing TTL” box is checked, the Signal Duration is set to 20 (ms) and a clearing value of 0x0 is used. Draw a connection from the TTL_SYNC_BEGIN node to the BLOCK sequence.



ensure that the recording has finished processing. Select the “Trigger” tab of the Component Toolbox and add a TIMER node to the graph. Edit the “Label” and “Message” properties of the node to “TIMER_STOP_EEG”. Set the “Duration” to 1000 (msecs). Draw a connection from the TTL_SYNC_END node to the TIMER_STOP_EEG node.



- 9) Select the “Action” tab of the Component Toolbox and add a BIOMETRIC_TTL node to the graph. Edit the “Label” and “Message” properties of the node to “STOP_EEG_RECORDING”, and set the “Operation” to “Stop Recording”. When the Operation is set to Stop Recording, the “TTL Signal Properties” will be set to “0xFF 20 0x0”—the data 0xFF (255) will be specified for “PauseOn” in Section 4. Draw a connection from TIMER_STOP_EEG to STOP_EEG_RECORDING.

Biosemi_EyeLink_Simple - SR Research Experiment Builder v 2.2.0.593

File Edit View Experiment Help

Overview

Structure

- BL_KEYBOARD
- BL_BUTTON
- DISPLAY_BLANK
- TTL_SYNC_END
- TIMER_STOP_EEG
- STOP_EEG_RECORDING

Properties

Property	Value
label	STOP_EEG_RECORDING
type	BiometricTTL
Node Path	STOP_EEG_RECORDING
Message	STOP_EEG_RECORDING
Time	
Start Time	
Clear Input Queues	<input checked="" type="checkbox"/>
Recipient Biometric Device	Biosemi
Operation	Stop Recording
TTL Device	PARALLELPORT_1
Register	DATA
TTL Signal Properties	0xFF 20 0x0
Clearing Message	

Click here to start the "Edit TTL Signal Properties" dialog box

Experiment BLOCK TRIAL RECORDING

START

INITIALIZE_TTL

INITIAL_DELAY

START_EEG_RECORDING

TIMER_START_EEG

TTL_SYNC_BEGIN

TIMER_STOP_EEG

TTL_SYNC_END

STOP_EEG_RECORDING

Click the "Action" tab and add a BIOMETRIC_TTL node

Edit the Label and Message

Choose "Biosemi" and "Stop Recording"

Edit TTL Signal Properties

Property	Value
Data	0xFF
Send Clearing TTL	<input checked="" type="checkbox"/>
Signal Duration	20
Clearing Value	0x0

Configure the TTL properties

Navigator

Biosemi_EyeLink_Simple_2_2_0_587

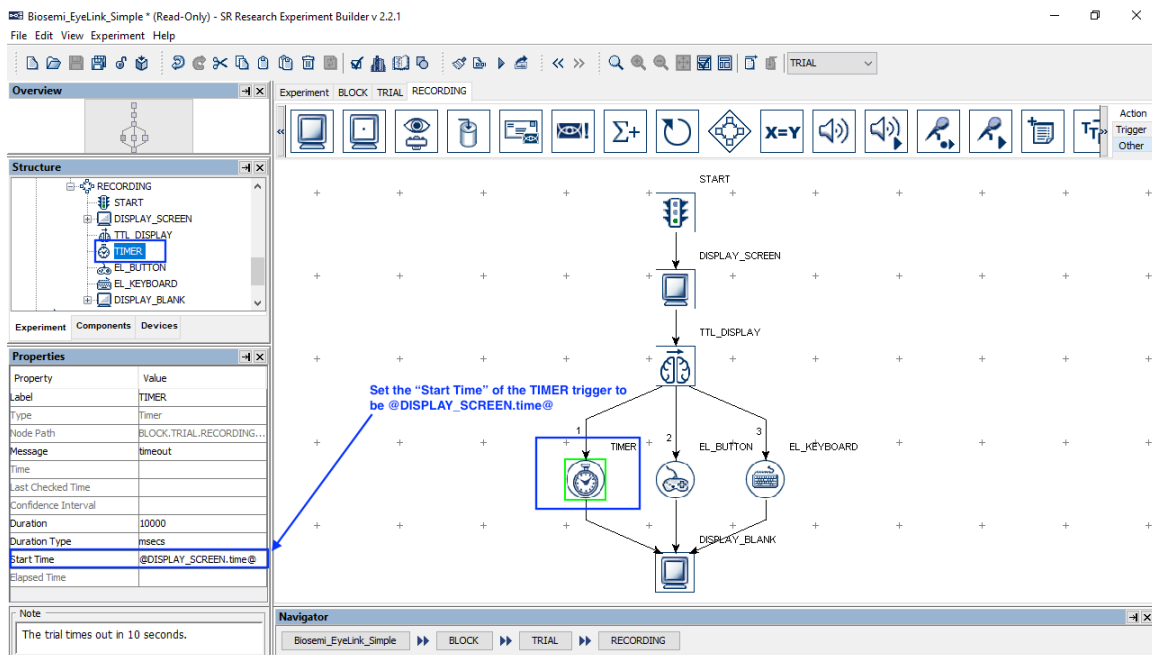
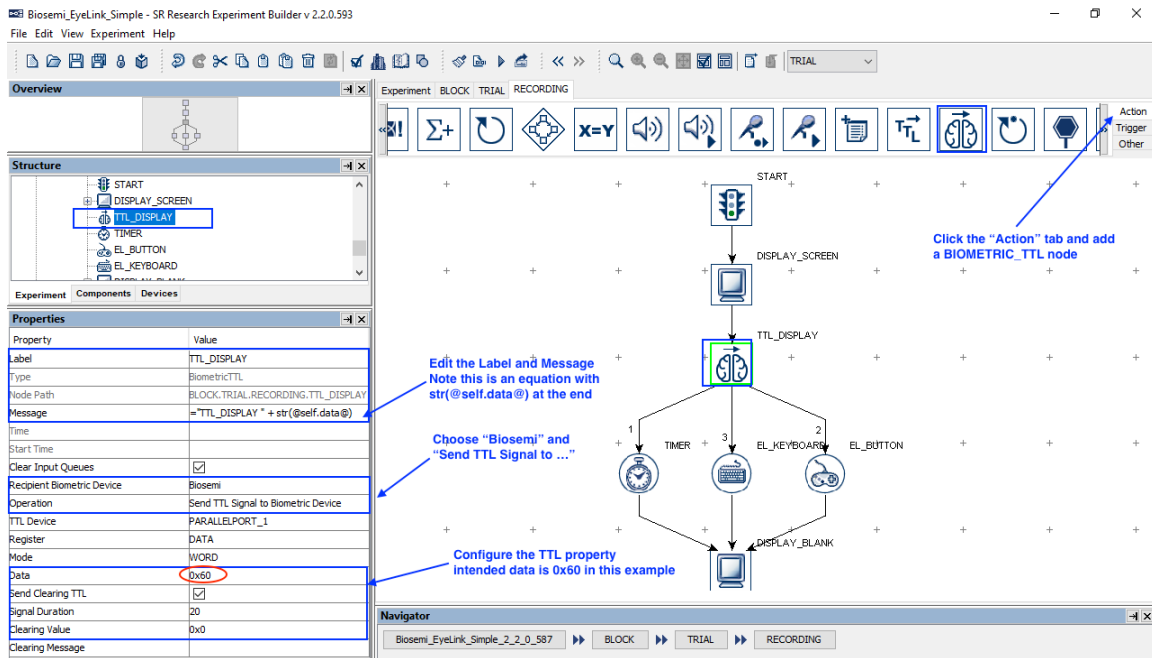
3 Sending Event Markers to EEG Recordings

To make sure events recorded in Experiment Builder are synchronized with the data collected by the Biosemi EEG, users can send TTL signals from Experiment Builder to mark the critical events in the experiment such as display and audio stimulus onsets, participant responses, etc. In this example, we will illustrate how to use a BIOMETRIC_TTL action to mark the onset of the DISPLAY_SCREEN actions and send the participant's response data to the EEG data stream. It is important to set the "Data" property of the BIOMETRIC_TTL actions to a unique value for each type of critical event. Users may sometimes also use the TTL signal to encode the trial condition information. Note that the values that can be used for the "Data" property may be dependent on the allowable values that can be set based on the EEG system being used. For the purposes of this example, we will use the hex value 0x60 (96 in decimal) for the DISPLAY_SCREEN, 0x61 (97) for the TIMER, 0x62 (98) for the EL_BUTTON, 0x63 (99) for the EL_KEYBOARD, and 0x64 (100) for the DISPLAY_BLANK. To simplify data alignment between the EEG and EyeLink recordings, the unique trigger value should also be written to the Message text of the BIOMETRIC_TTL actions.

Please note the Biosemi USB interface has 8-ms pulse duration, and therefore users don't need to send a clearing signal if it is used as the TTL device.

- 1) Double click the innermost RECORDING sequence to show events in the trial.
- 2) Select the "Action" tab of the Component Toolbox and add a BIOMETRIC_TTL action. Set the message of the action to '= "TTL_DISPLAY" + str(@self.data@)' (note that the expression must begin with an "="). The reference str(@self.data@) will record the TTL value in the message text. Set the "Recipient Biometric Device" to "Biosemi", and set the "Operation" to "Send TTL Signal to Biometric Device". Set the "Data" to 0x60. Check the "Send Clearing TTL" box, and set the Signal Duration to 20 (ms) and clearing value to 0x0. Draw a connection from the DISPLAY_SCREEN action to the newly added TTL_DISPLAY node. From the TTL_DISPLAY node, draw connections to the TIMER, EL_BUTTON, and EL_KEYBOARD nodes.

Important! For proper data alignment between the behavioral data and EEG recordings, please make sure the "Message" field of the BIOMETRIC_TTL action contains a uniquely identifiable string with the TTL value at the end of the text. Please also make sure the BIOMETRIC_TTL node is placed immediately after the event you want to mark in the EEG data.



=“TTL_TIMER” + str(@self.data@). Use the same property settings as in the previous BIOMETRIC_TTL actions except that the “Data” will be 0x61. Draw a connection from the TIMER node to TTL_TIMER, and from TTL_TIMER to DISPLAY_BLANK.

Overview

Structure

- DISPLAY_SCREEN
- TTL_DISPLAY
- TIMER
- EL_BUTTON
- TTL_TIMER

Properties

Property	Value
Label	TTL_TIMER
Type	BiometricTTL
Node Path	BLOCK.TRIAL.RECORDING.TTL_TIMER
Message	=TTL_TIMER * + str(@self.data@)
Time	
Start Time	
Clear Input Queues	<input checked="" type="checkbox"/>
Recipient Biometric Device	Biocsemi
Operation	Send TTL Signal to Biometric Device
TTL Device	PARALLELPORT_1
Register	DATA
Mode	WORD
Data	0x61
Send Clearing TTL	<input checked="" type="checkbox"/>
Signal Duration	20
Clearing Value	0x0
Clearing Message	

Experiment BLOCK TRIAL RECORDING

Diagram: START → DISPLAY_SCREEN → TTL_DISPLAY → (1) TIMER → (2) EL_BUTTON → (3) TTL_TIMER → DISPLAY_BLANK

Annotations:

- Click the “Action” tab and add a BIOMETRIC_TTL node
- Edit the Label and Message Note this is an equation with str(@self.data@) at the end
- Choose “Biocsemi” and “Send TTL Signal to ...”
- Configure the TTL property Intended data is 0x61 in this example

Navigator: Biosemi_EyeLink_Simple_2_2_0_587 BLOCK TRIAL RECORDING

- Now select the “Action” tab of the Component Toolbox and add a BIOMETRIC_TTL action. Set the Message of the action to =“TTL_BUTTON” + str(@self.data@). Use the same TTL settings except that the “Data” is set to 0x62. Draw a connection from the EL_BUTTON to DISPLAY_BLANK.

Overview

Structure

- DISPLAY_SCREEN
- TTL_DISPLAY
- TIMER
- EL_BUTTON
- TTL_TIMER
- TTL_BUTTON

Properties

Property	Value
Label	TTL_BUTTON
Type	BiometricTTL
Node Path	BLOCK.TRIAL.RECORDING.TTL_BUTTON
Message	=TTL_BUTTON * + str(@self.data@)
Time	
Start Time	
Clear Input Queues	<input checked="" type="checkbox"/>
Recipient Biometric Device	Biocsemi
Operation	Send TTL Signal to Biometric Device
TTL Device	PARALLELPORT_1
Register	DATA
Mode	WORD
Data	0x62
Send Clearing TTL	<input checked="" type="checkbox"/>
Signal Duration	20
Clearing Value	0x0
Clearing Message	

Experiment BLOCK TRIAL RECORDING

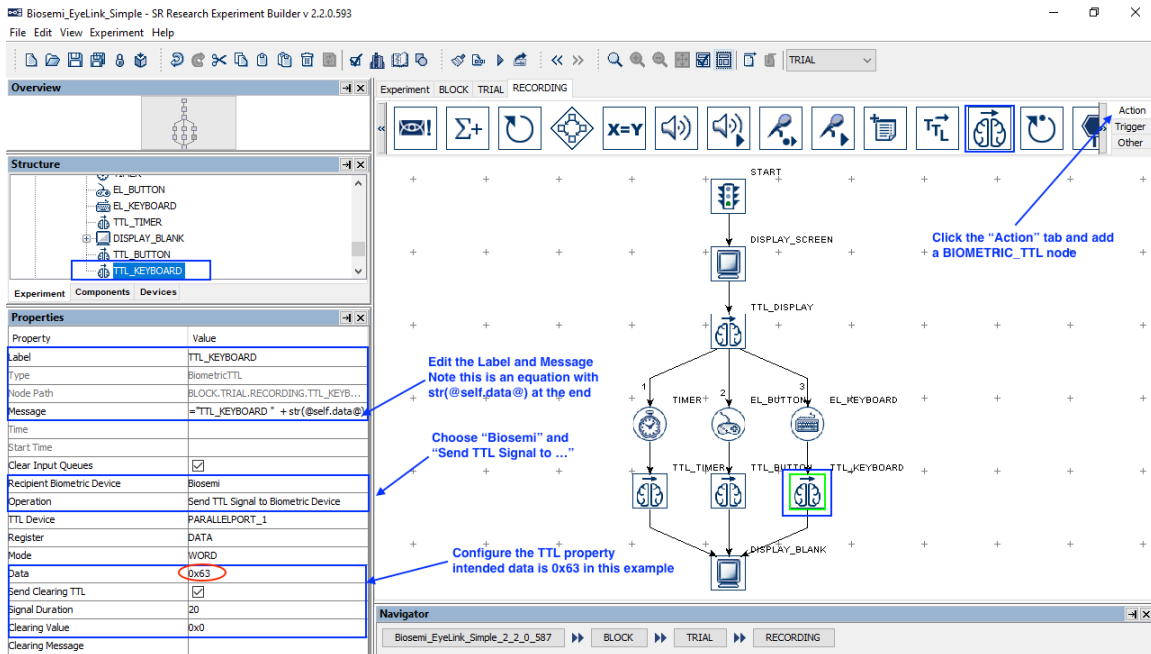
Diagram: START → DISPLAY_SCREEN → TTL_DISPLAY → (1) TIMER → (2) EL_BUTTON → (3) TTL_TIMER → DISPLAY_BLANK

Annotations:

- Click the “Action” tab and add a BIOMETRIC_TTL node
- Edit the Label and Message Note this is an equation with str(@self.data@) at the end
- Choose “Biocsemi” and “Send TTL Signal to ...”
- Configure the TTL property Intended data is 0x62 in this example

Navigator: Biosemi_EyeLink_Simple_2_2_0_587 BLOCK TRIAL RECORDING

- 6) Select the “Action” tab of the Component Toolbox and add a BIOMETRIC_TTL action. Set the Message of the action to =“TTL_KEYBOARD” + str(@self.data@). Use the same TTL settings except that the “Data” is set to 0x63. Draw a connection from the EL_KEYBOARD to DISPLAY_BLANK.



- 7) Finally, send a TTL signal when the end-of-trial blank screen is displayed. Select the “Action” tab of the Component Toolbox and add a BIOMETRIC_TTL action. Set the Message of the action to =“TTL_BLANK” + str(@self.data@), and “Data” to 0x64. Draw a connection from the DISPLAY_BLANK node to TTL_BLANK.

Biosemi_EyeLink_Simple - SR Research Experiment Builder v 2.2.0.593

File Edit View Experiment Help

Overview Experiment BLOCK TRIAL RECORDING

Structure

- TIMER
- EL_BUTTON
- EL_KEYBOARD
- TTL_TIMER
- DISPLAY_BLANK
- TTL_BLANK

Properties

Property	Value
Label	TTL_BLANK
Type	BiometricTTL
Node Path	BLOCK.TRIAL.RECORDING.TTL_BLANK
Message	"TTL_BLANK" + str(@self.data@)
Time	
Start Time	
Clear Input Queues	<input checked="" type="checkbox"/>
Recipient Biometric Device	Biosemi
Operation	Send TTL Signal to Biometric Device
TTL Device	PARALLELPORT_1
Register	DATA
Mode	WORD
Data	0x64
Send Clearing TTL	<input checked="" type="checkbox"/>
Signal Duration	20
Clearing Value	0x0
Clearing Message	

Click the "Action" tab and add a BIOMETRIC_TTL node

Edit the Label and Message
Note this is an equation with str(@self.data@) at the end

Choose "Biosemi" and "Send TTL Signal to ..."

Configure the TTL property
Intended data is 0x64 in this example

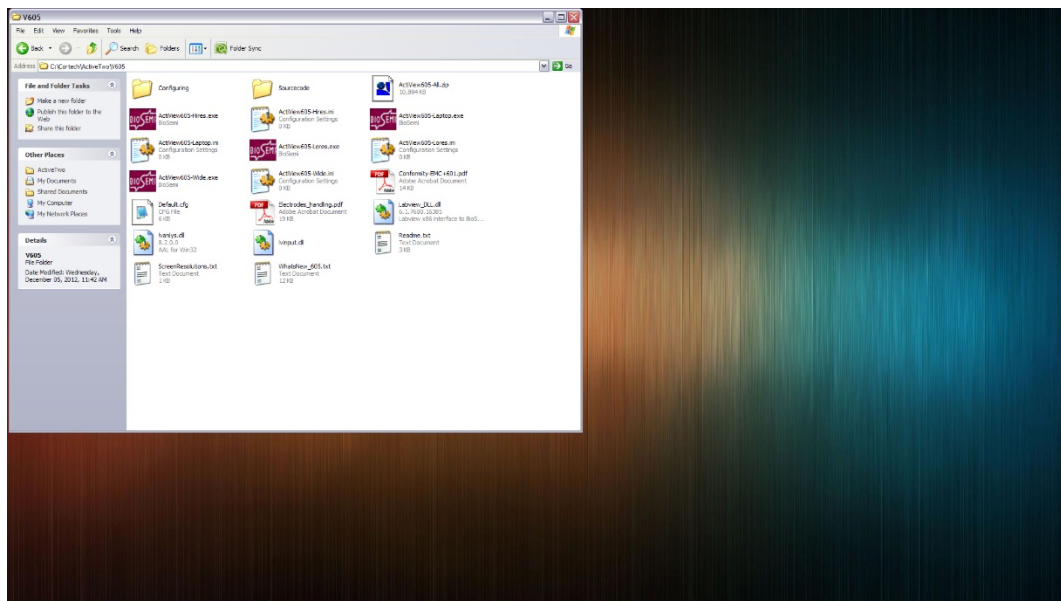
Navigator

Biosemi_EyeLink_Simple_2_2_0_587 BLOCK TRIAL RECORDING

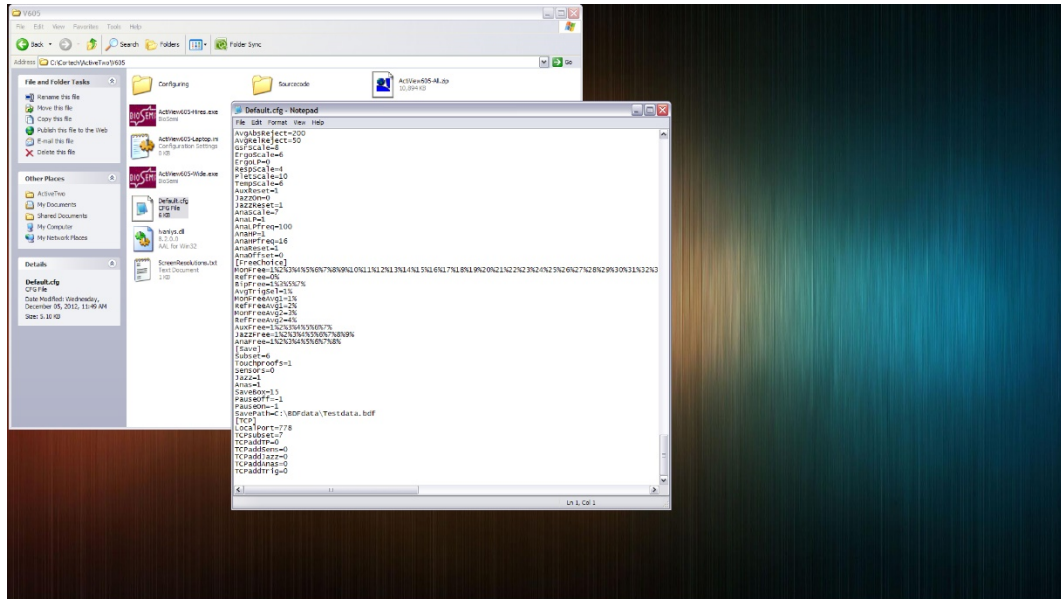
4 Configuring Trigger Settings for the Biosemi Computer

For some EEG systems, trigger commands can be sent or received in order to start and stop the EEG recording (or to “pause” the EEG file) to ensure that unnecessary information is not being recorded. The following section covers how to enable this functionality on the BioSemi Active Two EEG system by editing the system’s default configuration file.

- 1) On the EEG computer, navigate to the installation folder and open the file “default.cfg” with a text editor, such as Notepad or Wordpad.



- 2) Scroll to the end of the file and find the “PauseOff” and “PauseOn” settings. By default, they are set to -1, which means that the pause/unpause functionality is disabled.

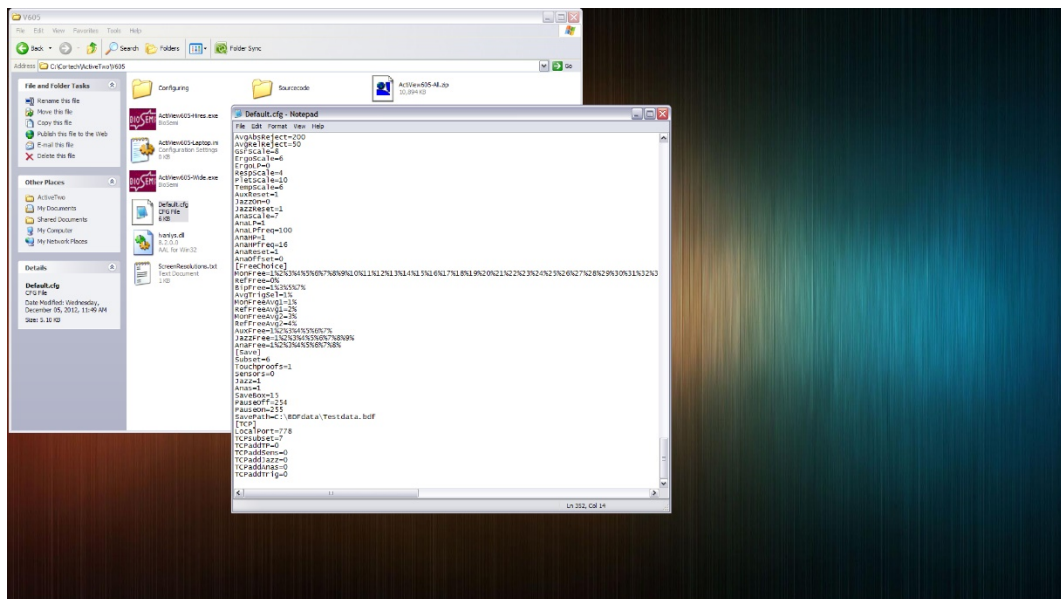


- 3) To enable the pause function, change the PauseOff and PauseOn triggers from -1 to 254 and 255. The values should be entered as follows:

PauseOff=254

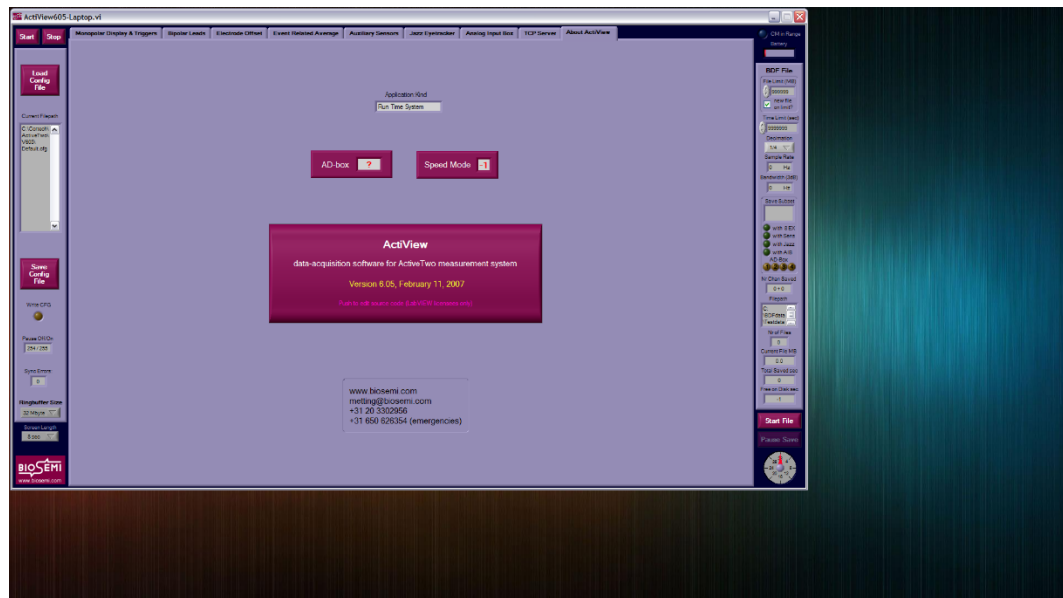
PauseOn=255

While this example uses the values 254 and 255, the PauseOff and PauseOn commands may be assigned any two unique values within the pin configuration (typically 0-255) that will not be used elsewhere in your experiment. Whatever two values used here will not be usable for any other functionality apart from pausing and unpausing the EEG recording.



- 4) Save the file under the same name, “default.cfg”, and exit from the text editor.

- 5) In order to check that these triggers have been enabled, load BioSemi ActiView on the EEG PC, and under the “About ActiView” tab, the new trigger values for PauseOff and PauseOn should be displayed on the bottom left sidebar.



The EEG computer should now be set up to receive these trigger commands from the Display PC in order to start and stop the EEG recording. Note that the above triggers only control the pausing of the EEG data file during the experiment. The experimenter will still need to manually start a new data file at the beginning of data collection.